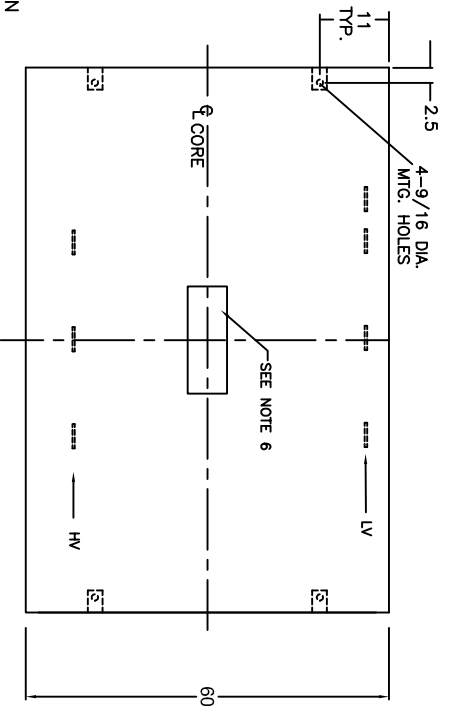


- NOTE:
1. TRANSFORMER SITS ON ENCLOSURE BASE
  2. METAL GAUGE TO CSA-C22 No. 94-M91
  3. PAINT ASA # 61 GRAY
  4. BOLTED, KNOCK DOWN CONSTRUCTION
  5. OPEN BOTTOM
  6. COVERED OPENING FOR ACCESS TO LIFTING POINTS

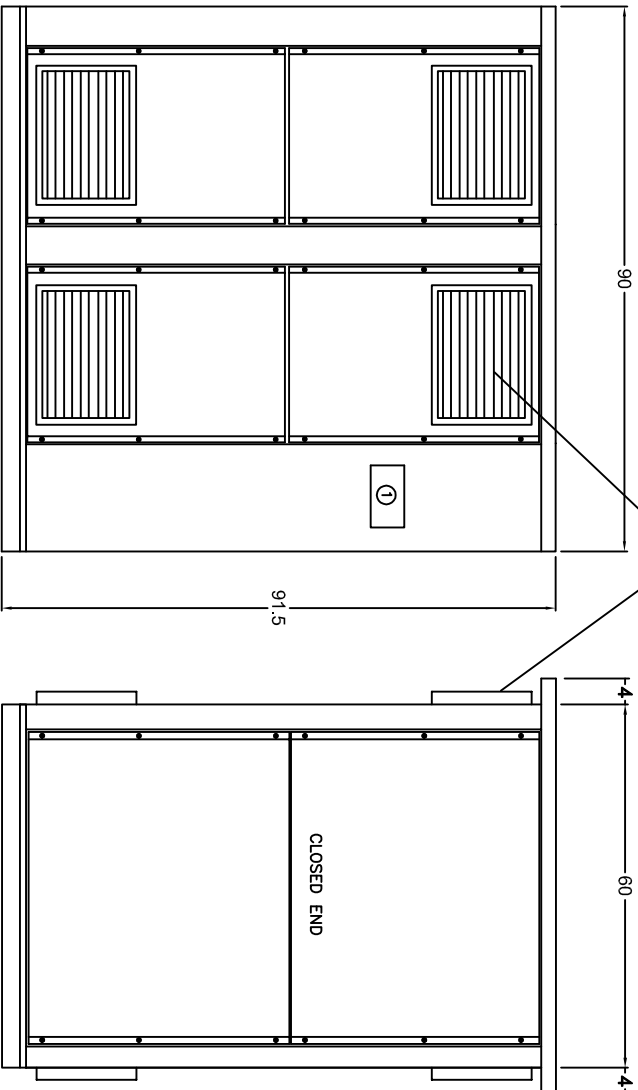
CSA TYPE 3R (NEMA 3R)  
INDOOR/OUTDOOR USE

APPROX. WEIGHT:  
CORE & COIL: 7800 LBS  
ENCLOSURE: 1250 LBS  
TOTAL: 9050 LBS



PLAN VIEW  
(COVER REMOVED)

VENTILATION LOUVRES



FRONT VIEW

SIDE VIEW

TRANSFORMER:

KVA: 1750

**PRIMARY VOLTAGE CLASS: 1.2 KV**

PRIMARY VOLTAGE:  600 VOLTS DELTA  
OR  
 480 VOLTS DELTA  
OR  
 OTHER \_\_\_\_\_

PRIMARY TAPS: 2x2.5% FCAN, 2x2.5% FCBN

SECONDARY VOLTAGE:  240V/138 VOLTS  
OR  
 208V/120 VOLTS  
OR  
 OTHER \_\_\_\_\_

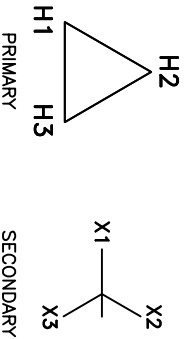
**PRIMARY B.I.L.:** 10 KV  
SECONDARY B.I.L.: 10 KV  
INSULATION CLASS: 220°C  
TEMPERATURE RISE: 150°C  
IMPEDANCE: STANDARD  
SOUND LEVEL: STANDARD

WINDING MATERIAL:  COPPER  
OR  
 ALUMINUM

TERMINAL MATERIAL:  COPPER  
OR  
 ALUMINUM

STANDARD FEATURES: ANTI-VIBRATION PADS

VECTOR DIAGRAM



① NAME PLATE

**Note:** Dimensions may change if units are co-ordinated with switchgear.  
Dimensions are estimates. For firm dimensions contact factory.

REV.	REMARKS	BY	DATE

**REX POWER MAGNETICS**  
DIVISION OF TRANSFORMER INDUSTRIES INC.

SCALE: N.T.S.    DRAWING BY: SARKIS    DATE: MAY 12, 09    SHEET: 0

TITLE: 1750KVA 1.2KV CLASS ENCLOSURE OUTLINE  
NEMA-3R

DRAWING No. 1750KVA-BIL10-3R