



REX POWER MAGNETICS

DIVISION OF TRANSFACTOR INDUSTRIES INC.
65 Basaltic Rd. Concord, ON, L4K 1G4 Canada
Tel: 905-695-8844, 1-800-387-2840 Fax: 905-695-8855
www.RexPowerMagnetics.com

TRANSFORMER SPECIFICATION

- 3 Phase Auto
- Dry Type
- ANN -Self cooled

Purchaser: TBA
 PO#: TBA
 SWO#: TBA
 Qty: TBA

PRELIMINARY DRAWING ONLY

This drawing may **NOT** truly reflect our Final Design. Any resulting order(s) must be accompanied by, or refer to this drawing and be marked with any proposed changes.

Coils: Copper Wound
 Cat. No.: RC30H-B
 kVA: 30
 Primary: 480 Volts
 Secondary: 208 Volts
 Frequency: 60 Hz
 Insulation Class: 220° C
 Temperature Rise: 150° C
 Impedance: 3.0 - 4.0 %
 Weight: 200 Lbs

Termination	Location	Lug Size
Primary:	Front	2-14 AWG
Secondary:	Front	2-14 AWG

Wiring Connection:

Primary:
 Voltage 480
 Connect Lines To: H1-H2-H3

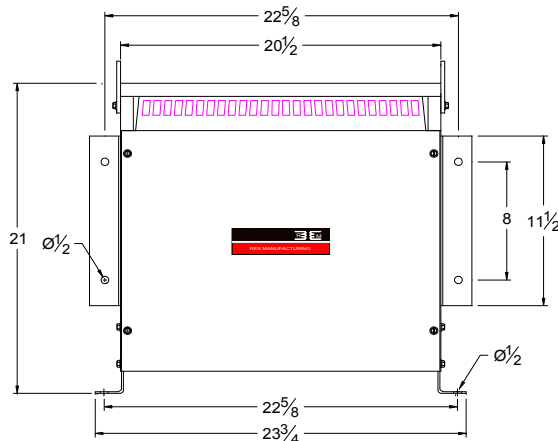
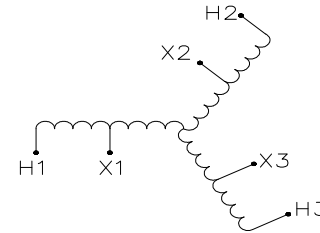
Secondary:
 Voltage 208
 Connect Loads To: X1-X2-X3

Standards:

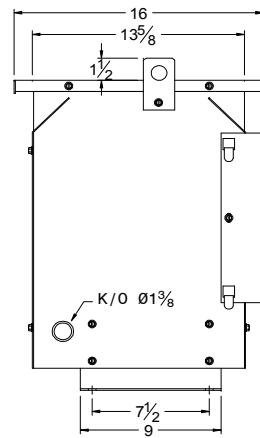
1. CSA Certified
 - File No. LR34493
2. UL Listed
 - File No. E108255

Standard Features:

1. Anti-Vibration pads installed between the enclosure base and the core & coil assembly
2. Ground lug provided



FRONT VIEW



SIDE VIEW

CSA Enclosure:

1. Type 2 (NEMA 2)
 - Sprinklerproof when the angle between sprinkler heads and opening in the enclosure does Not exceed 45 degree from the vertical.
2. Indoor Ventilated
3. ASA 61 Grey
4. Floor/Wall Mounting

Prepared by: AP

Approved by: VS

Date: DEC.4, 2008