



**REX POWER MAGNETICS**

DIV. OF TRANSFACTOR INDUSTRIES INC.  
 65 BASALTIC ROAD, CONCORD, ONTARIO  
 CANADA L4K 1G4 FAX: (905) 695-8855  
 TEL: (905) 695-8844 1-800-387-2840  
 WWW.REXPOWERMAGNETICS.COM

**EPOXY ENCAPSULATED TRANSFORMER**

- 1 Phase Isolation
- Dry Type
- ANC Self Cooled

Purchaser: TBA  
 PO#: TBA  
 SWO#: TBA  
 Qty: TBA

**PRELIMINARY DRAWING ONLY**  
 THIS DRAWING MAY NOT TRULY REFLECT  
 OUR FINAL DESIGN. ANY RESULTING ORDER(S)  
 MUST BE ACCOMPANIED BY, OR REFER TO THIS  
 DRAWING AND BE MARKED WITH ANY PROPOSED  
 CHANGES.

Coils: Copper  
 Cat. No.: SC7H-K/EP

kVA: 7.5  
 Primary: 480 Volts  
 Secondary: 120/240 Volts  
 Primary Taps: 5 %  
 -Taps FCAN 1  
 -Taps FCBN 1

Frequency: 60 Hz

BIL: 10 kV  
 Insulation Class: 200° C  
 Temperature Rise: 130° C  
 Impedance: 4.0 - 5.0 %

Weight: 163 Lbs

Termination	Location	Lug Size
Primary:	Front	2-14 AWG
Secondary:	Front	2-14 AWG

**Wiring Connection:**

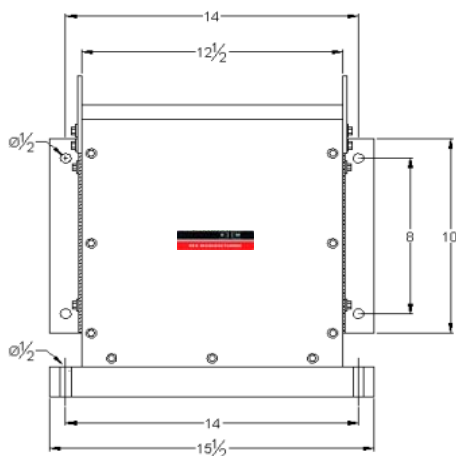
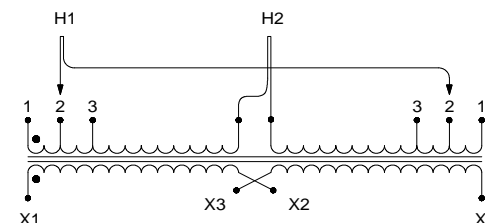
Primary:	% Tap	Jumpers To:
504	105.0	1 - 1
480	100.0	2 - 2
456	95.0	3 - 3

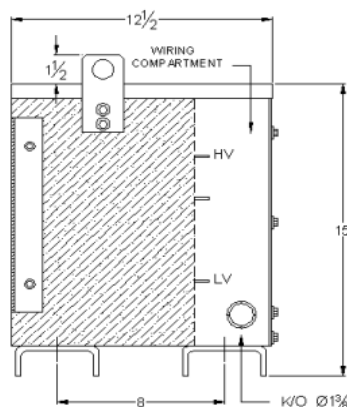
Secondary:	Interconnect:	Connect Loads To:
240	X2 to X3	X1 - X4
120	X1 to X3 and X2 to X4	X1 - X4
120/240	X2 to X3	X1 - X2 - X4 ( X2 is a neutral )

**Standards:**

1. CSA Certified  
 - File No. LR34493
2. UL Listed  
 - File No. E108255



FRONT VIEW



SIDE VIEW

**CSA Enclosure:**

- Type 3R (NEMA 3R)
- Indoor/Outdoor Ventilated
- ASA 61 Grey
- Floor/Wall Mounting

Rev.	Remarks	By	Appr. By	Date

Prepared by: AP  
 Approved by: VS  
 Date: Feb.6, 2012