



DIVISION OF TRANSFACTOR INDUSTRIES INC.  
 65 Basaltic Rd. Concord, ON, L4K 1G4 Canada  
 Tel: 905-695-8844, 1-800-387-2840 Fax: 905-695-8855  
 www.RexPowerMagnetics.com

**EPOXY ENCAPSULATED TRANSFORMER**

- 1 Phase Isolation
- Dry Type
- ANC Self Cooled

**PRELIMINARY DRAWING ONLY**  
 This drawing may NOT truly reflect our Final Design. Any resulting order(s) must be accompanied by, or refer to this drawing and be marked with any proposed changes.

Purchaser: TBA  
 PO#: TBA  
 SWO#: TBA  
 Qty: TBA

Coils: Copper  
 Cat. No.: SC7J-K/EP

kVA: 7.5  
 Primary: 600 Volts  
 Secondary: 120/240 Volts  
 Primary Taps: 5 %  
 -Taps FCAN: 1  
 -Taps FCBN: 1

Frequency: 60 Hz

BIL: 10 kV  
 Insulation Class: 200° C  
 Temperature Rise: 130° C  
 Impedance: 4.0 - 5.0 %

Weight: 117 Lbs

Termination	Location	Lug Size
Primary:	Front	2-14 AWG
Secondary:	Front	2-14 AWG

**Wiring Connection:**

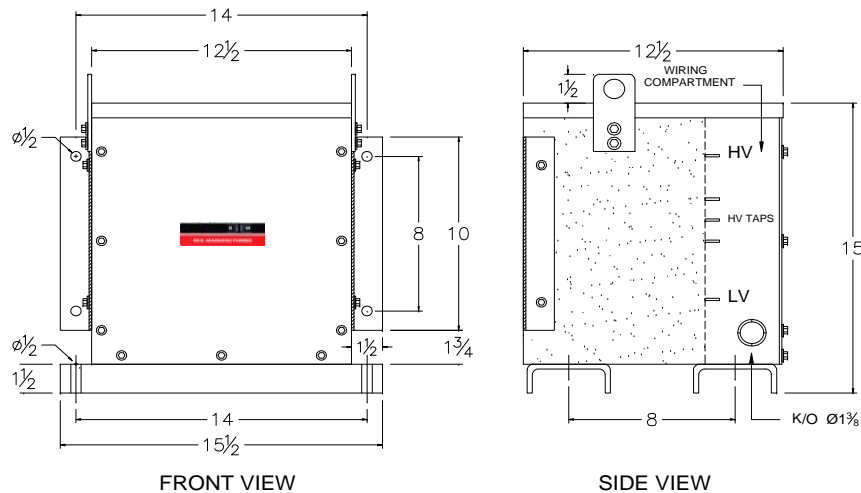
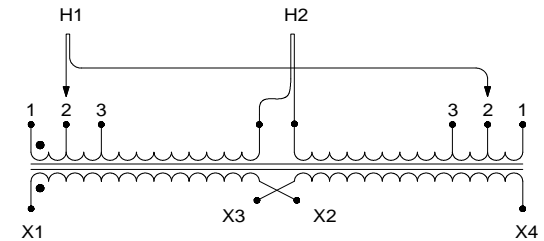
Primary:	Voltage	% Tap	Jumpers To:
630	105.0		1 - 1
600	100.0		2 - 2
570	95.0		3 - 3

Secondary:	Voltage	Interconnect:	Connect Loads To:
240		X2 to X3	X1 - X4
120		X1 to X3 and X2 to X4	X1 - X4
120/240		X2 to X3	X1 - X2 - X4 ( X2 is a neutral )

**Standards:**

1. CSA Certified  
 - File No. LR34493
2. UL Listed  
 - File No. E108255



**CSA Enclosure:**

- Type 3R (NEMA 3R)
- Indoor/Outdoor Ventilated
- ASA 61 Grey
- Floor/Wall Mounting

Rev.	Remarks	By	Appr. By	Date

Prepared by: AP  
 Approved by: VS  
 Date: June 28, 2011